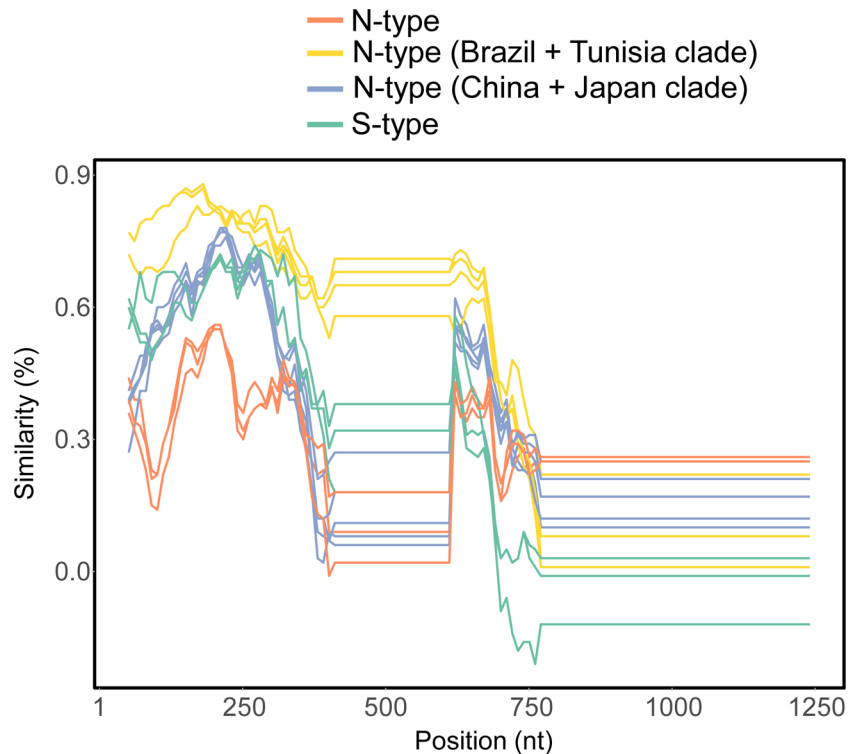


Supplementary Fig. 6. Leek yellow stripe virus (LYSV) P1 expression in leaves of *Nicotiana benthamiana* infiltrated with *Agrobacterium* containing the P1 constructs. Total proteins were extracted from agroinfiltrated patches in Fig. 5A, and FLAG-tagged P1 proteins (N- and S-type) were detected by western blots using anti-FLAG monoclonal antibody. GUS indicates the control infiltrated with *Agrobacterium* containing plasmid pBE2113. Coomassie blue staining of Rubisco large subunit is shown as a loading control.



Supplementary Fig. 7. Similarity plot of nucleotide sequences for P1 region of LYSV against that of N-type P1 of LYSV Tunisian isolate 2.1 (GenBank accession no. MH890561). Nucleotide similarities were estimated using the Kimura (two-parameter) model, a window size of 100 nt, and a step size of 10 nt. Five P1 sequence from Brazil + Tunisia clade (KP236097, KP236101, KP236102, KP236103, MH890559) and China + Japan clade (AB636327, MN059500, MN059520, MN059534, MN059543) were included. New sequences from the isolates in this study were also included as representative N- and S-type P1.