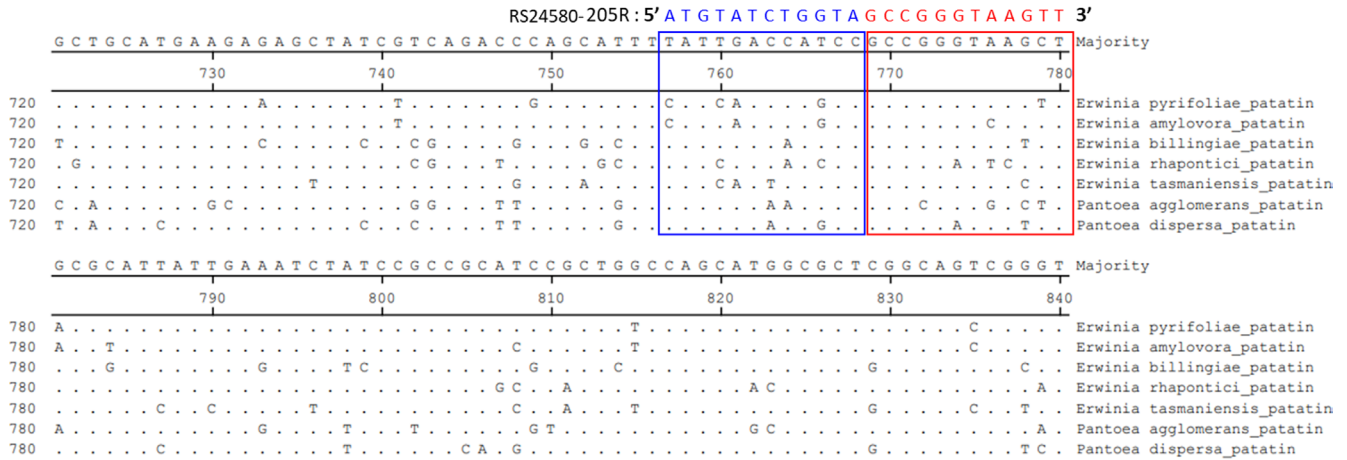
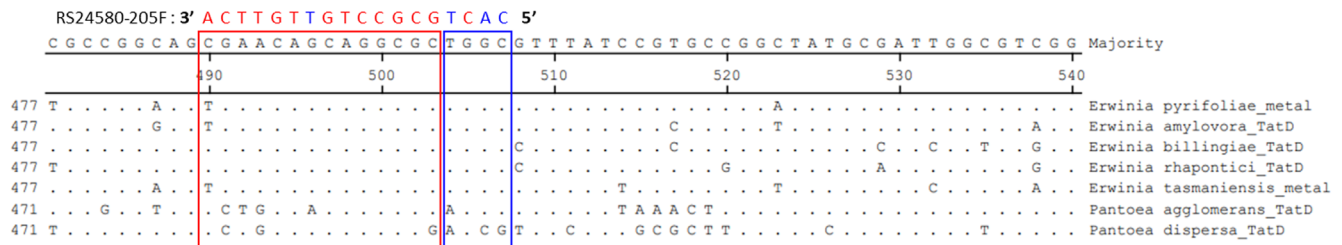


## Patatin-like phospholipase family protein



## Metal-dependent hydrolase



**Supplementary Fig. 1.** Comparison among primer binding sequences of *Erwinia pyrifoliae* (patatin-like phospholipase family protein: WP\_012667017.1, metal-dependent hydrolase: WP\_012667018.1), *E. amylovora* (CBA22802.1, CBA22800.1), *E. billingiae* (WP\_013200642.1, WP\_013200643.1), *E. rhapontici* (WP\_227535120.1, WP\_227535119.1), *E. tasmaniensis* (WP\_012440412.1, WP\_012440413.1), *Pantoea agglomerans* (WP\_233987132.1, WP\_233987133.1), and *P. dispersa* (WP\_031279725.1, WP\_215786634.1). Red indicates matched primer sequences; blue indicates mismatched primer sequences.