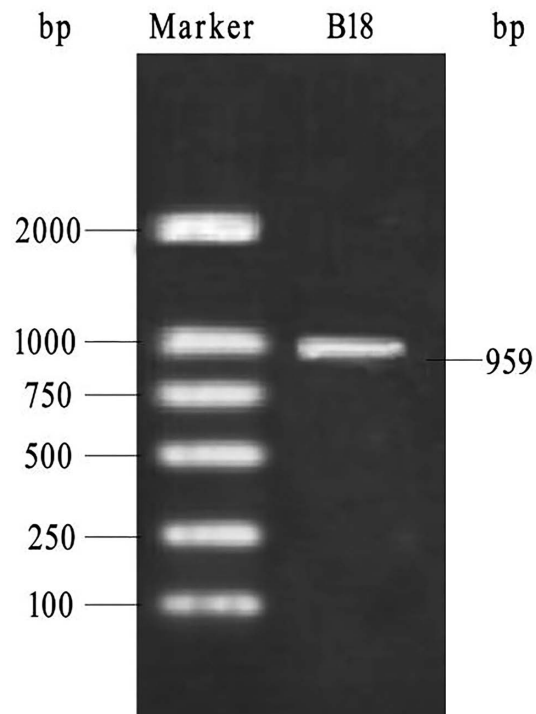
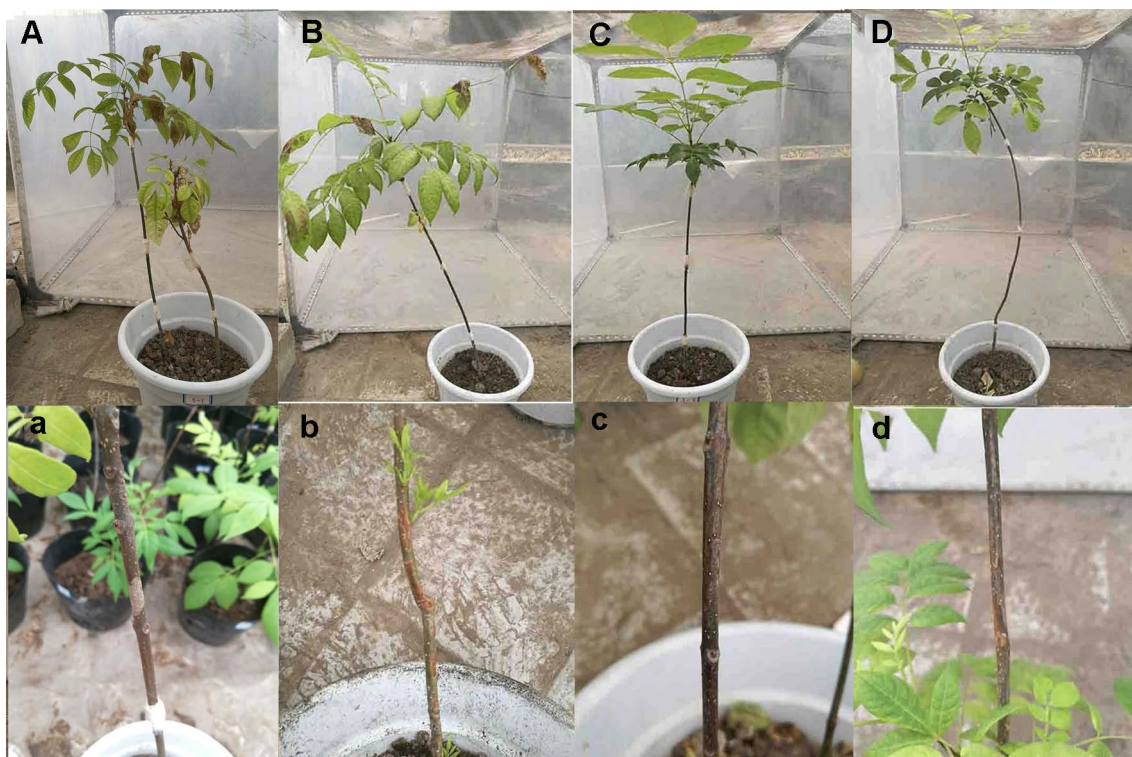


Supplementary Fig. 1. Micromorphology of the B18 strain by light microscope. (A) Rod shapes; (B) spores



Supplementary Fig. 2. PCR amplification of the 16S rDNA sequence of strain B18.



Supplementary Fig. 3. Control effect of the B18 culture liquid on canker rot in *Phellodendron amurense* seedlings in pot culture. (A) The concentration of B18 is 0 cfu/ml (untreated plants with inoculation), a: Symptomatic manifestation. (B) The concentration of B18 is 10^4 cfu/ml, b: Symptomatic manifestation; (C) The concentration of B18 is 10^6 cfu/ml, c: Symptomatic manifestation; (D) The concentration of B18 is 10^8 cfu/ml, d: Symptomatic manifestation