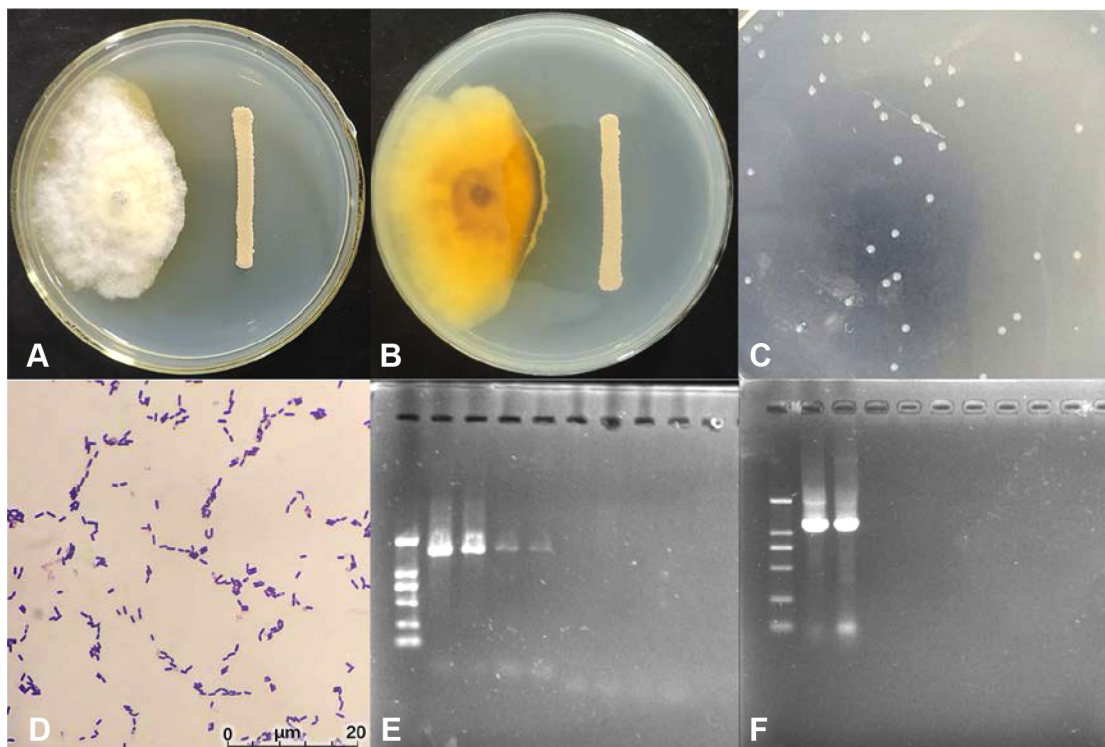


Supplementary Table 1. Physiological and biochemical characteristics of the W1 strain

Characteristics	Result
Gram staining	+
Catalase	+
Gelatine hydrolysis	+
Citrate utilization test	+
Starch hydrolysis	+

+, a positive reaction.



Supplementary Fig. 1. Effect of the antagonistic bacterium and its identification. (A) Front view of the bacterium antagonists *Diaporthe guangxinsis*. (B) Back view of the bacterium antagonists *Diaporthe guangxinsis*. (C) Single colony diagram of the antagonistic bacterium. (D) Spore diagram of the antagonistic bacterium. (E) Electrophoresis diagram of the antagonistic bacterium 16S rRNA gene polymerase chain reaction (PCR) amplification products. (F) Electrophoresis diagram of the antagonistic bacterium *gyrB* gene PCR amplification products.